

## Haus 29b

Untergeschoss

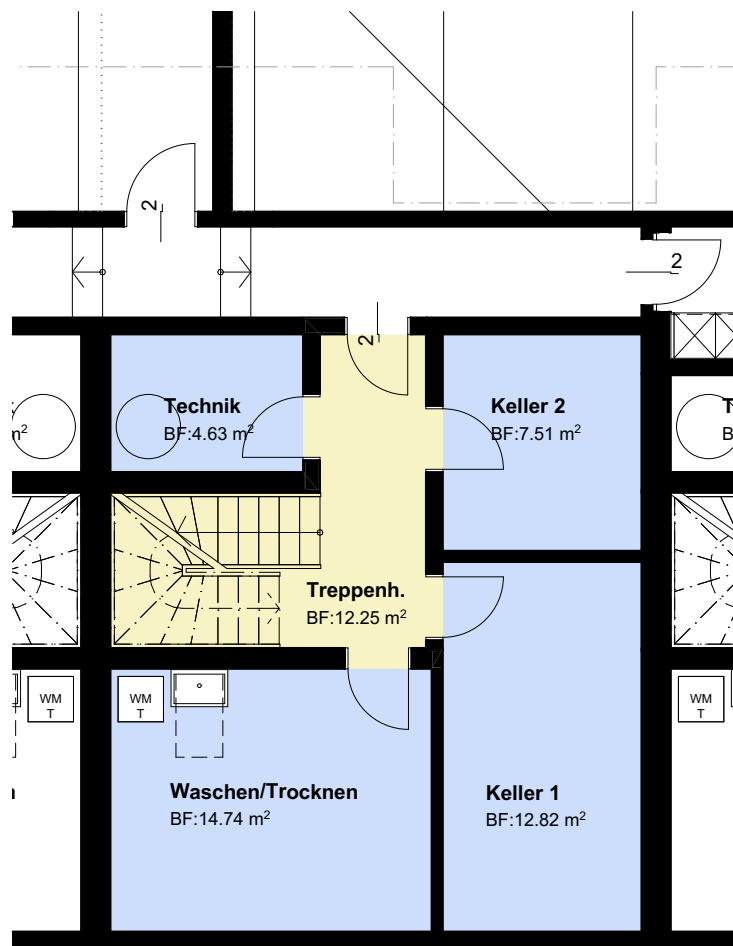
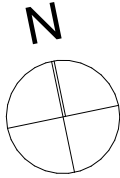
Mst: 1:100

6.5 Zimmer

Grundstücksfläche: 197.37 m<sup>2</sup>

Wohnfläche: 199.34 m<sup>2</sup>

Keller/Technik: 39.70 m<sup>2</sup>



## Haus 29b

Erdgeschoss

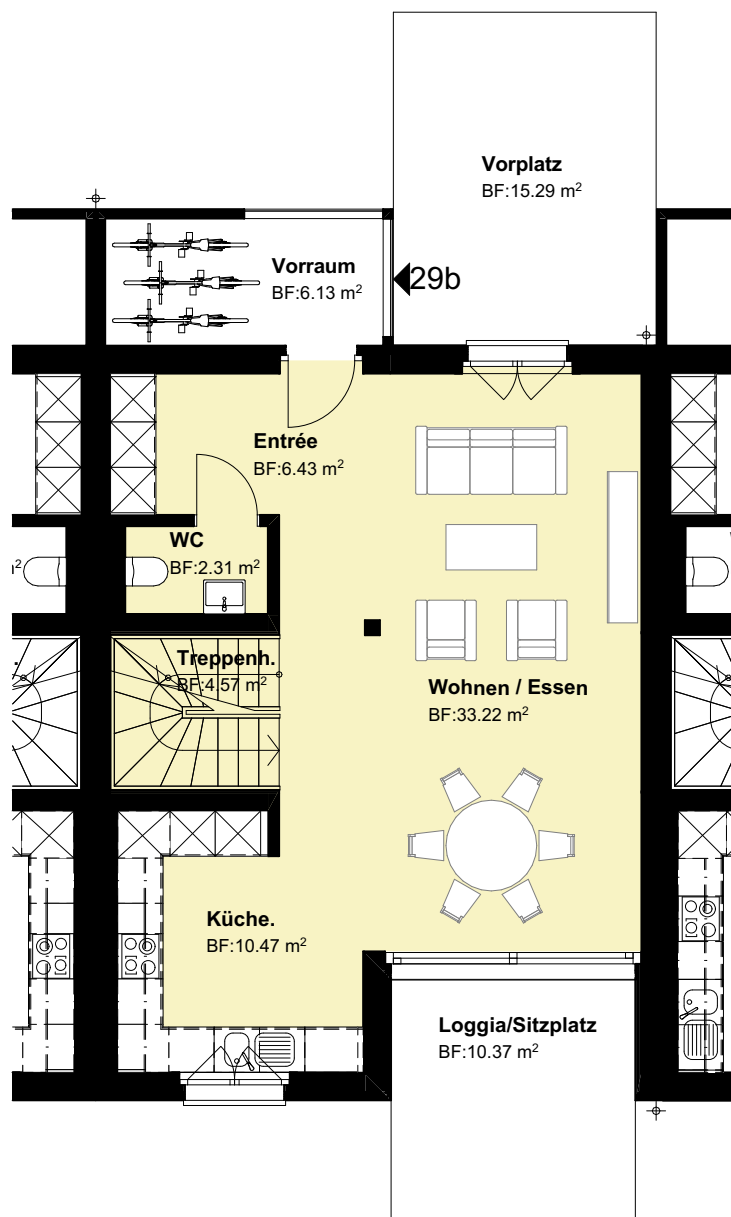
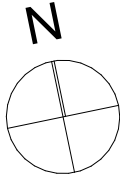
Mst: 1:100

6.5 Zimmer

Grundstücksfläche: 197.37 m<sup>2</sup>

Wohnfläche: 199.34 m<sup>2</sup>

Keller/Technik: 39.70 m<sup>2</sup>



## Haus 29b

Erdgeschoss/Umgebung

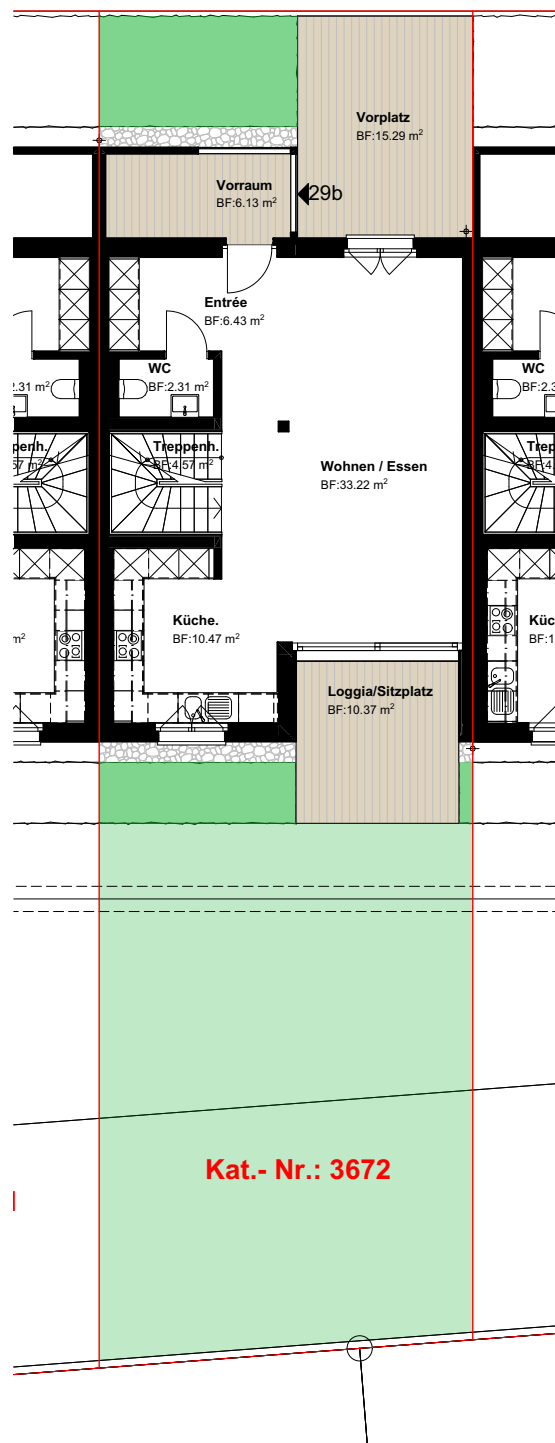
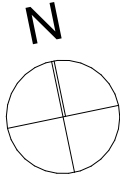
Mst: 1:150

6.5 Zimmer

Grundstücksfläche: 197.37 m<sup>2</sup>

Wohnfläche: 199.34 m<sup>2</sup>

Keller/Technik: 39.70 m<sup>2</sup>



## Haus 29b

Obergeschoss

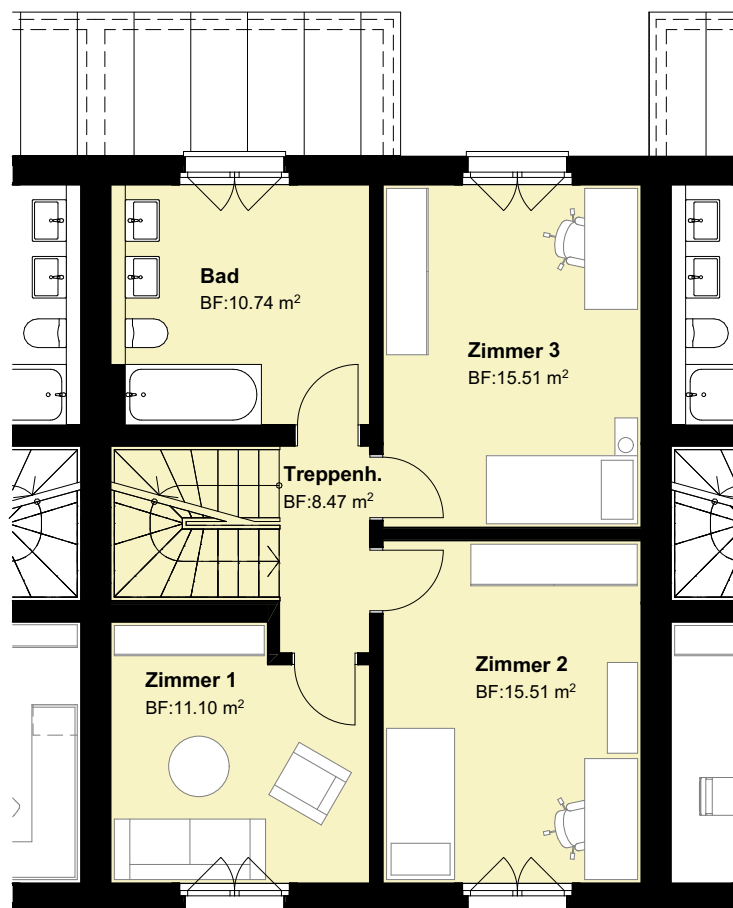
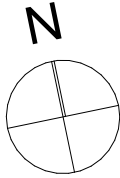
Mst: 1:100

6.5 Zimmer

Grundstücksfläche: 197.37 m<sup>2</sup>

Wohnfläche: 199.34 m<sup>2</sup>

Keller/Technik: 39.70 m<sup>2</sup>



## Haus 29b

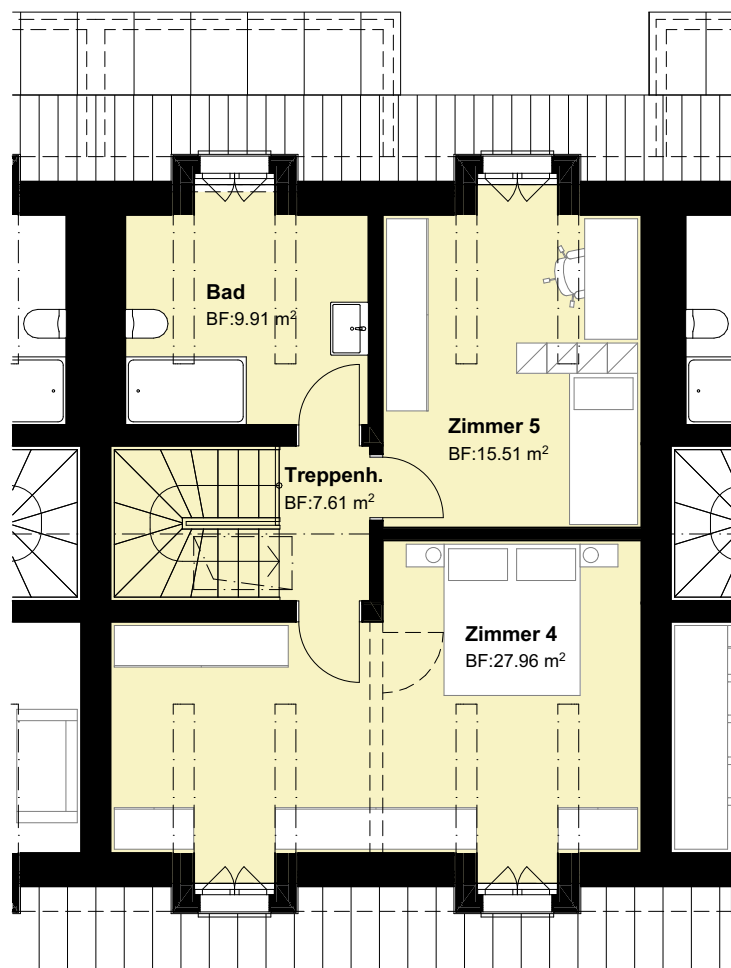
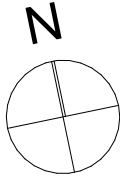
1. Dachgeschoss  
Mst: 1:100

6.5 Zimmer

Grundstücksfläche: 197.37 m<sup>2</sup>

Wohnfläche: 199.34 m<sup>2</sup>

Keller/Technik: 39.70 m<sup>2</sup>



## Haus 29b

2. Dachgeschoss  
Mst: 1:100

6.5 Zimmer

Grundstücksfläche: 197.37 m<sup>2</sup>

Wohnfläche: 199.34 m<sup>2</sup>

Keller/Technik: 39.70 m<sup>2</sup>

