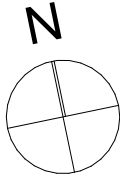


## Haus 29a

Untergeschoss

Mst: 1:100

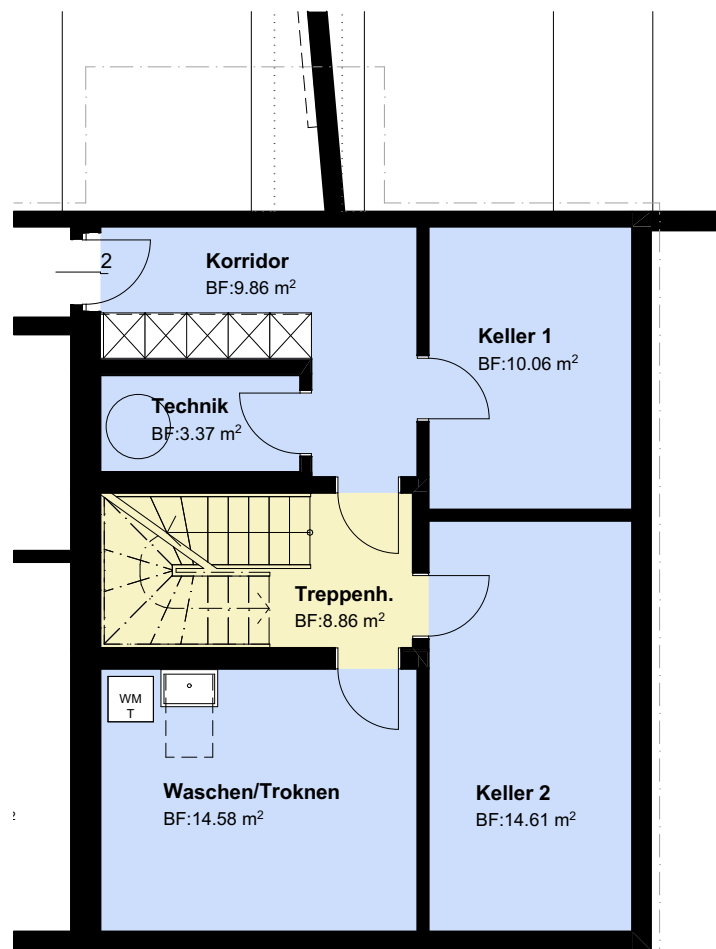
6.5 Zimmer



Grundstücksfläche: 302.40 m<sup>2</sup>

Wohnfläche: 201.89 m<sup>2</sup>

Keller/Technik: 52.48 m<sup>2</sup>



## Haus 29a

Erdgeschoss

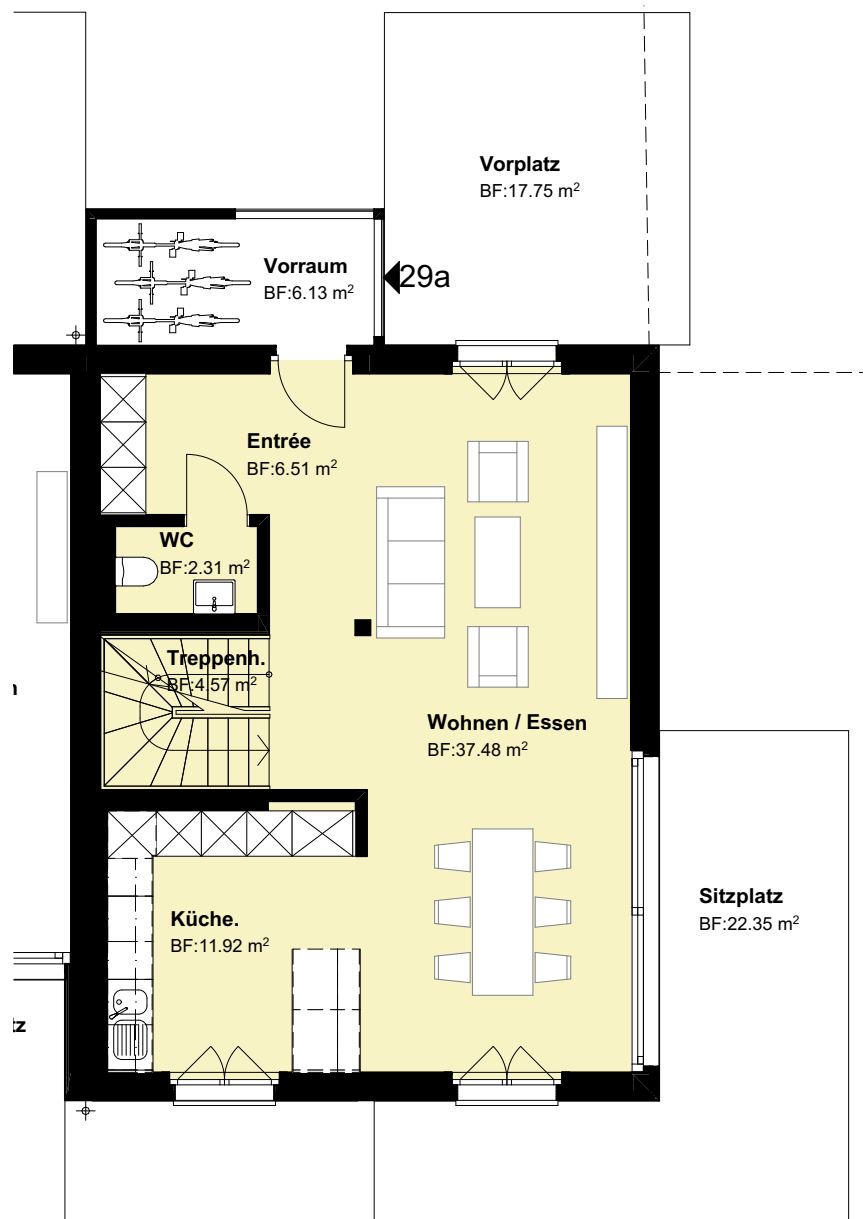
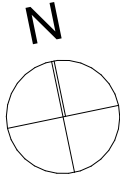
Mst: 1:100

6.5 Zimmer

Grundstücksfläche: 302.40 m<sup>2</sup>

Wohnfläche: 201.89 m<sup>2</sup>

Keller/Technik: 52.48 m<sup>2</sup>



## Haus 29a

Erdgeschoss/Umgebung

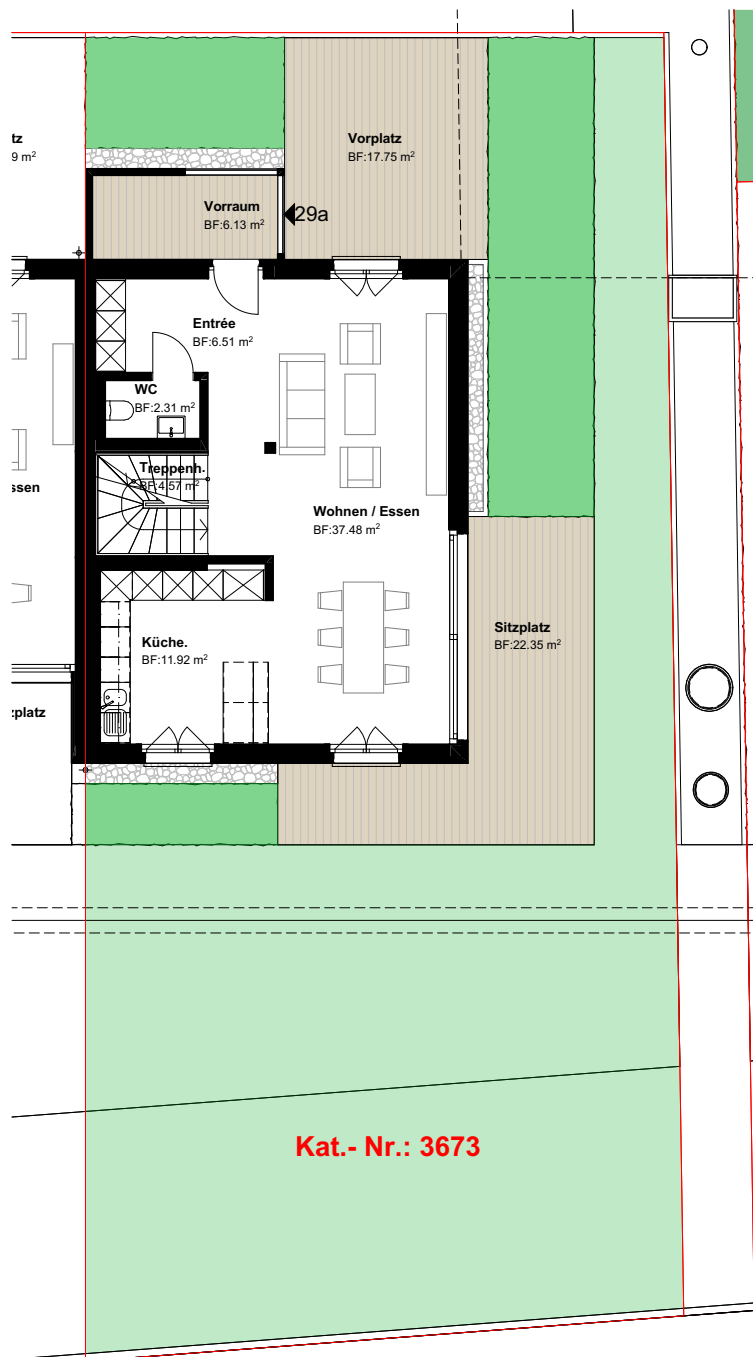
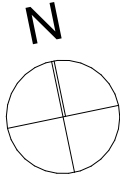
Mst: 1:150

6.5 Zimmer

Grundstücksfläche: 302.40 m<sup>2</sup>

Wohnfläche: 201.89 m<sup>2</sup>

Keller/Technik: 52.48 m<sup>2</sup>



## Haus 29a

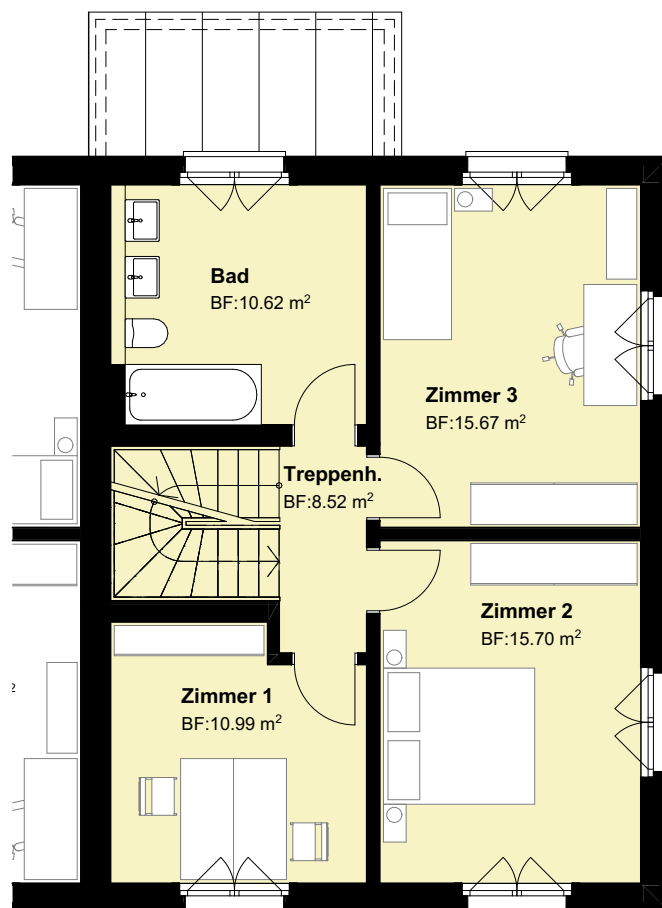
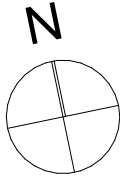
Obergeschoss  
Mst: 1:100

6.5 Zimmer

Grundstücksfläche: 302.40 m<sup>2</sup>

Wohnfläche: 201.89 m<sup>2</sup>

Keller/Technik: 52.48 m<sup>2</sup>



## Haus 29a

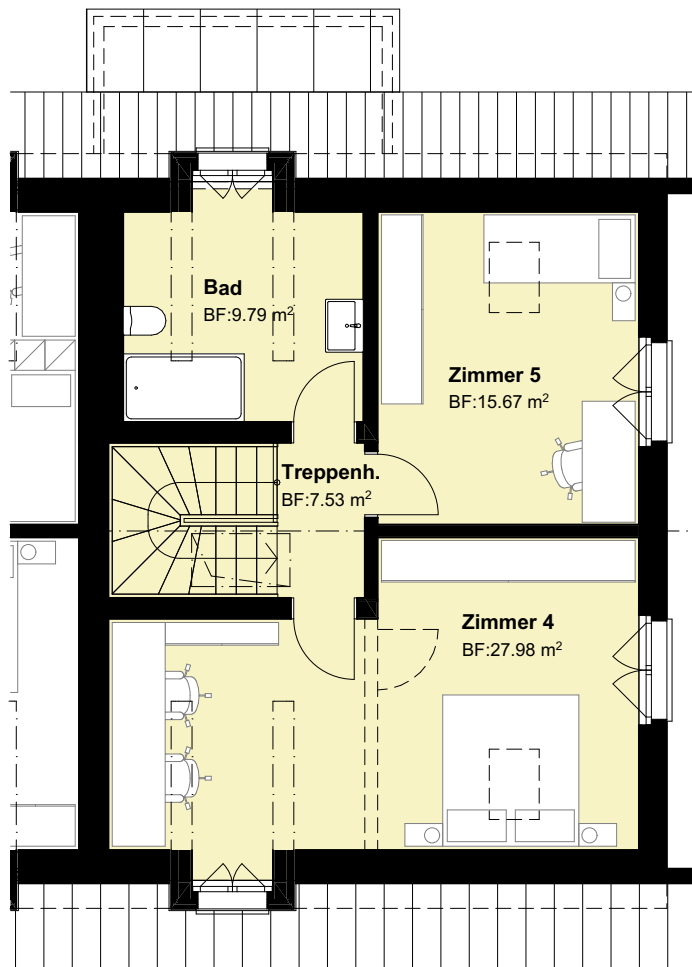
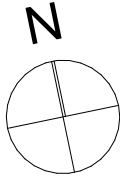
1. Dachgeschoss  
Mst: 1:100

6.5 Zimmer

Grundstücksfläche: 302.40 m<sup>2</sup>

Wohnfläche: 201.89 m<sup>2</sup>

Keller/Technik: 52.48 m<sup>2</sup>



## Haus 29a

2. Dachgeschoss  
Mst: 1:100

6.5 Zimmer

Grundstücksfläche: 302.40 m<sup>2</sup>

Wohnfläche: 201.89 m<sup>2</sup>

Keller/Technik: 52.48 m<sup>2</sup>

