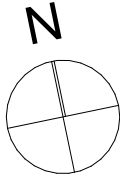


Haus 29d

Untergeschoss

Mst: 1:100

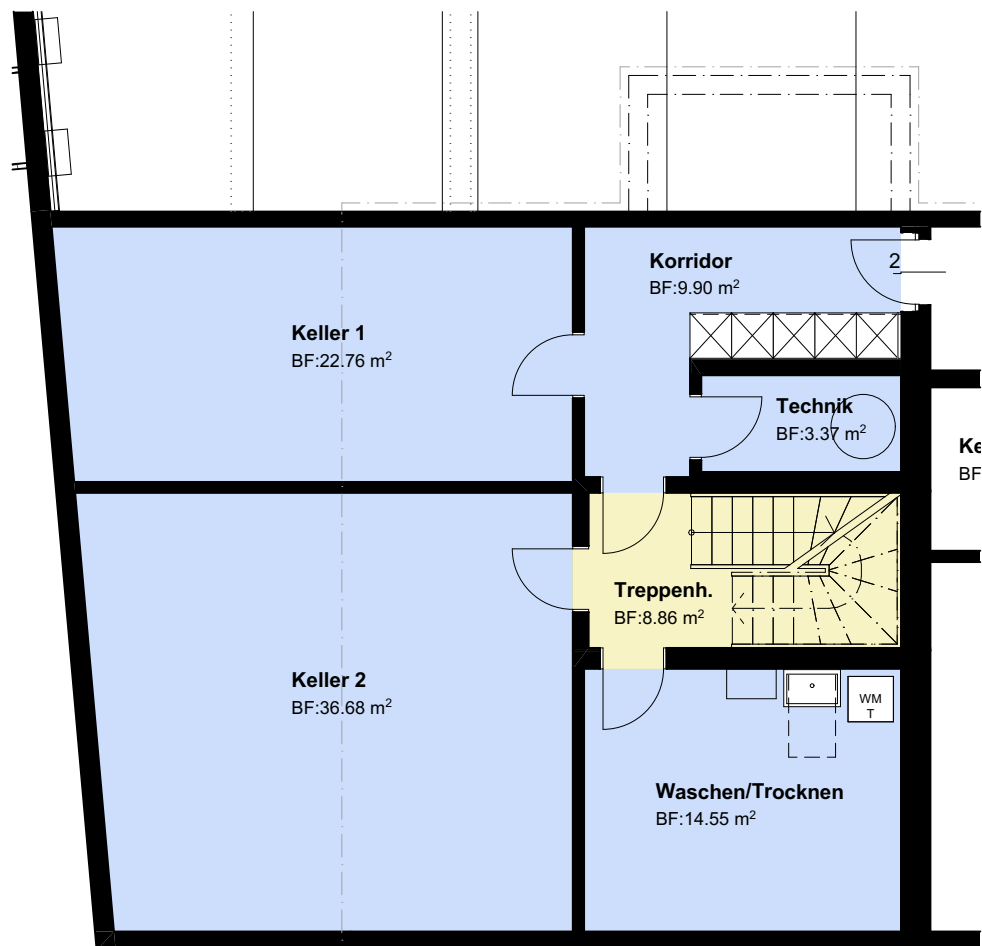
6.5 Zimmer



Grundstücksfläche: 429.39 m²

Wohnfläche: 207.38 m²

Keller/Technik: 87.26 m²



Haus 29d

Erdgeschoss

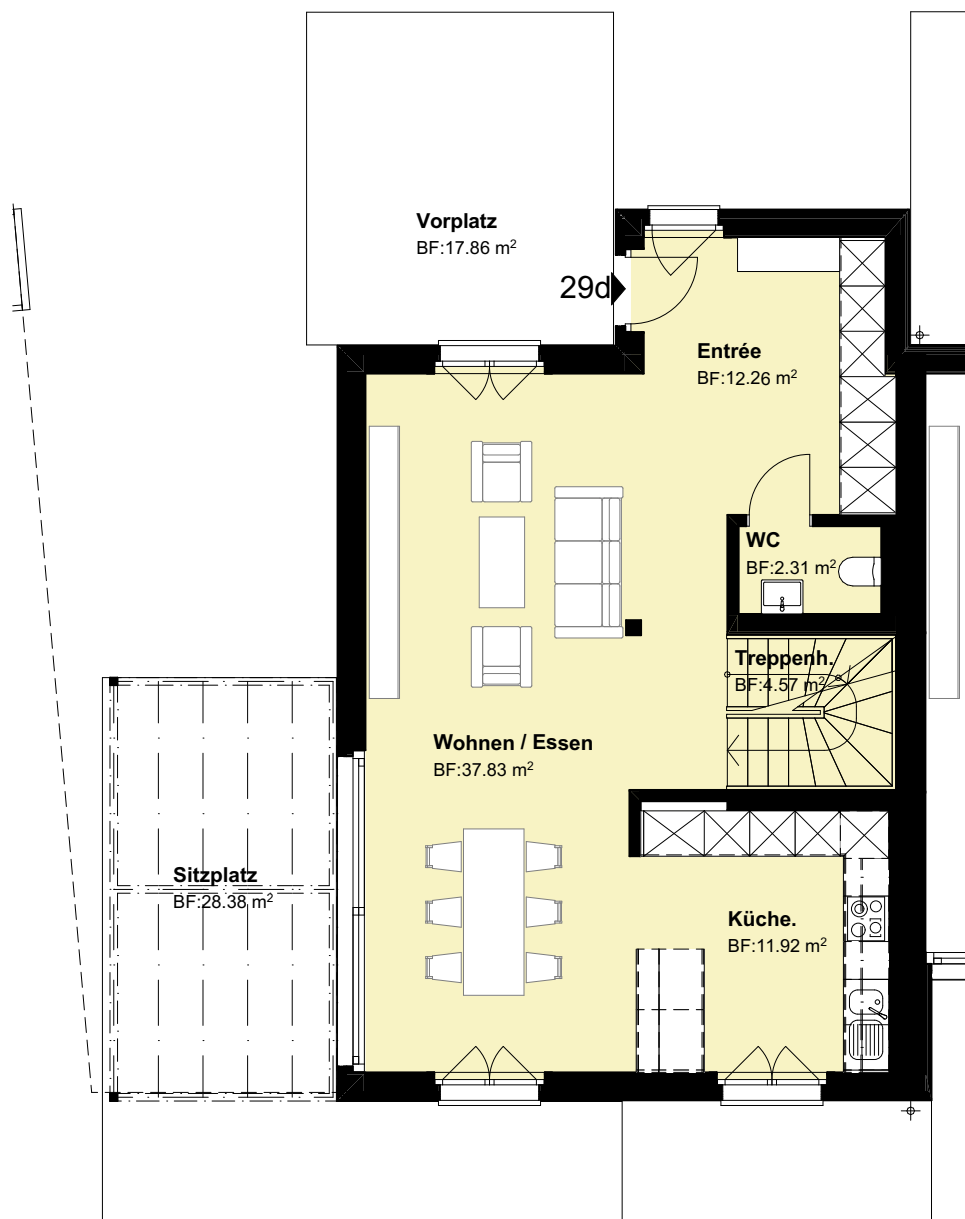
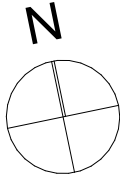
Mst: 1:100

6.5 Zimmer

Grundstücksfläche: 429.39 m²

Wohnfläche: 207.38 m²

Keller/Technik: 87.26 m²



Haus 29d

Erdgeschoss/Umgebung

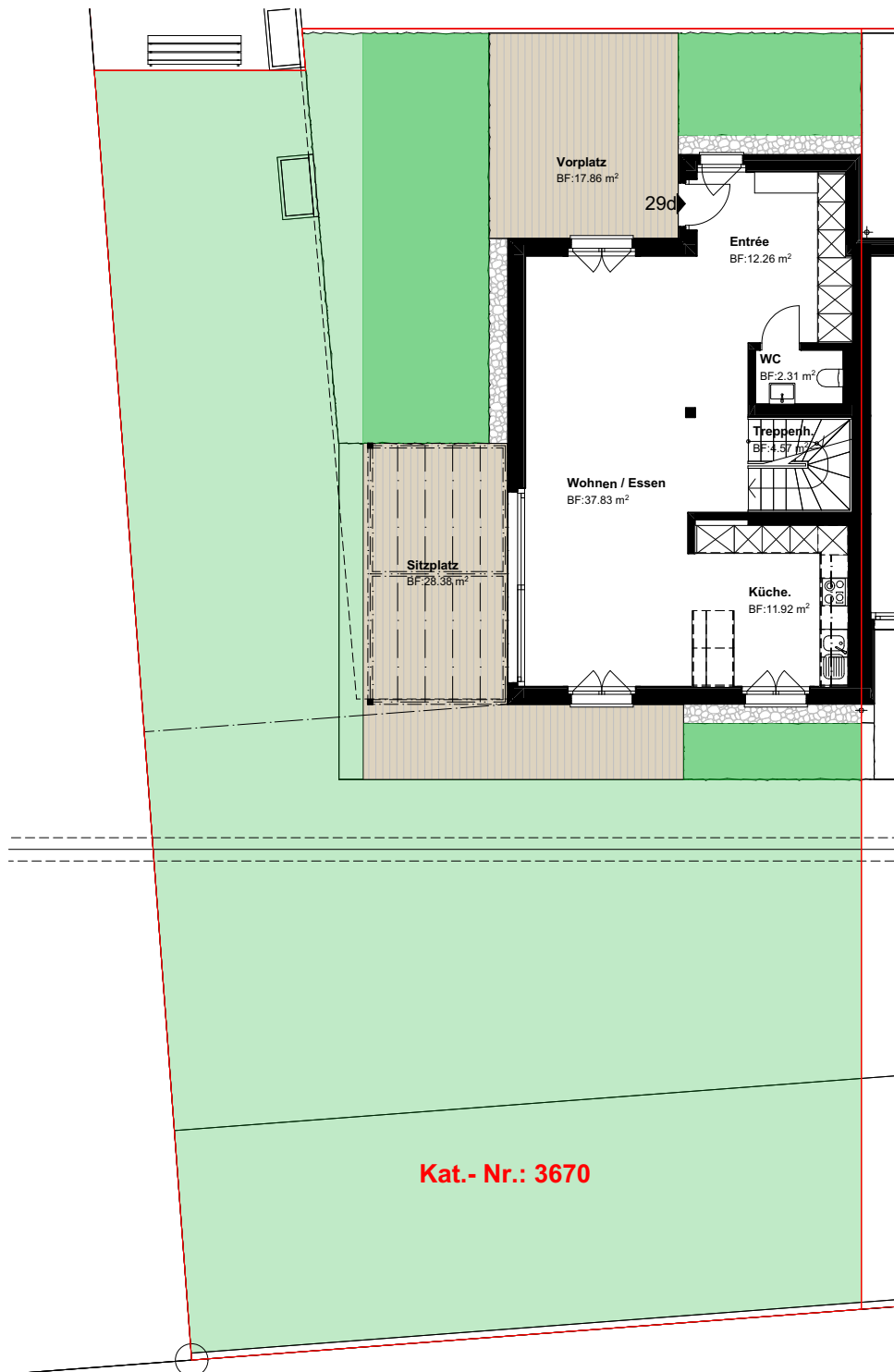
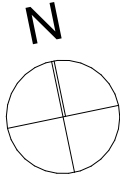
Mst: 1:150

6.5 Zimmer

Grundstücksfläche: 429.39 m²

Wohnfläche: 207.38 m²

Keller/Technik: 87.26 m²



Haus 29d

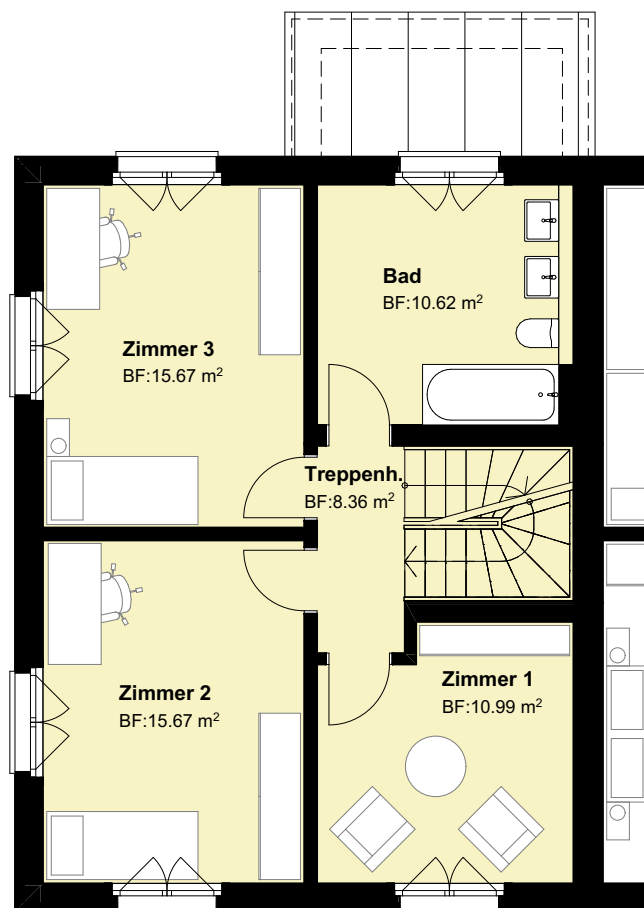
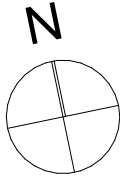
Obergeschoss
Mst: 1:100

6.5 Zimmer

Grundstücksfläche: 429.39 m²

Wohnfläche: 207.38 m²

Keller/Technik: 87.26 m²



Haus 29d

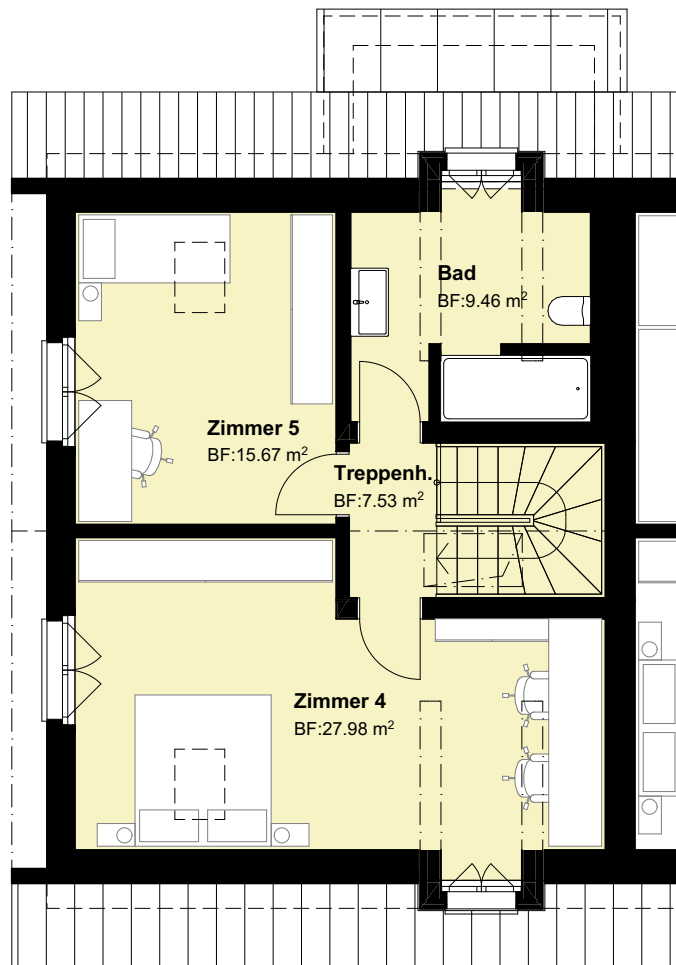
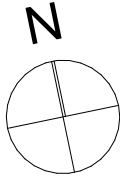
1. Dachgeschoss
Mst: 1:100

6.5 Zimmer

Grundstücksfläche: 429.39 m²

Wohnfläche: 207.38 m²

Keller/Technik: 87.26 m²



Haus 29d

2. Dachgeschoss
Mst: 1:100

6.5 Zimmer

Grundstücksfläche: 429.39 m²

Wohnfläche: 207.38 m²

Keller/Technik: 87.26 m²

